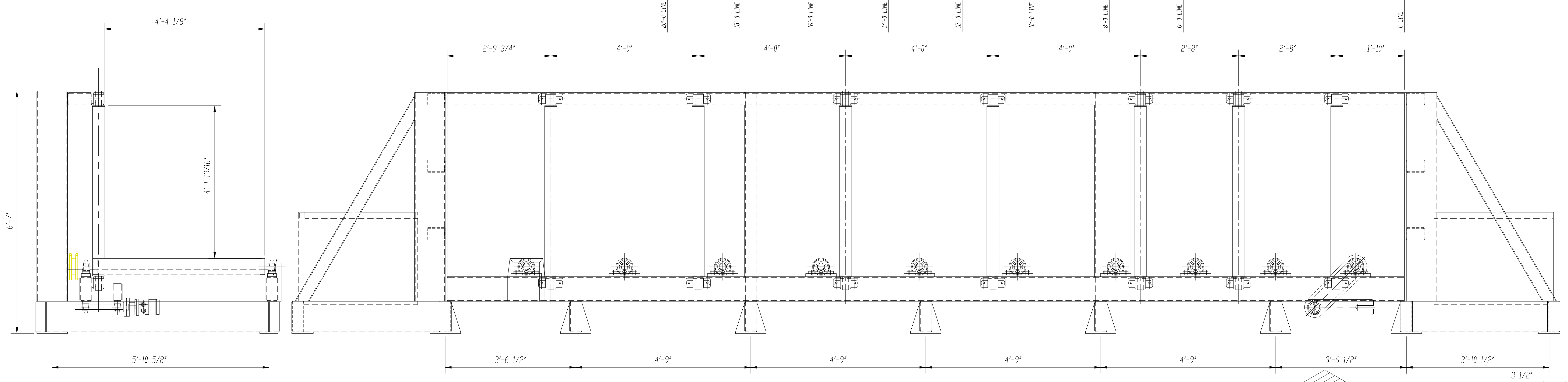
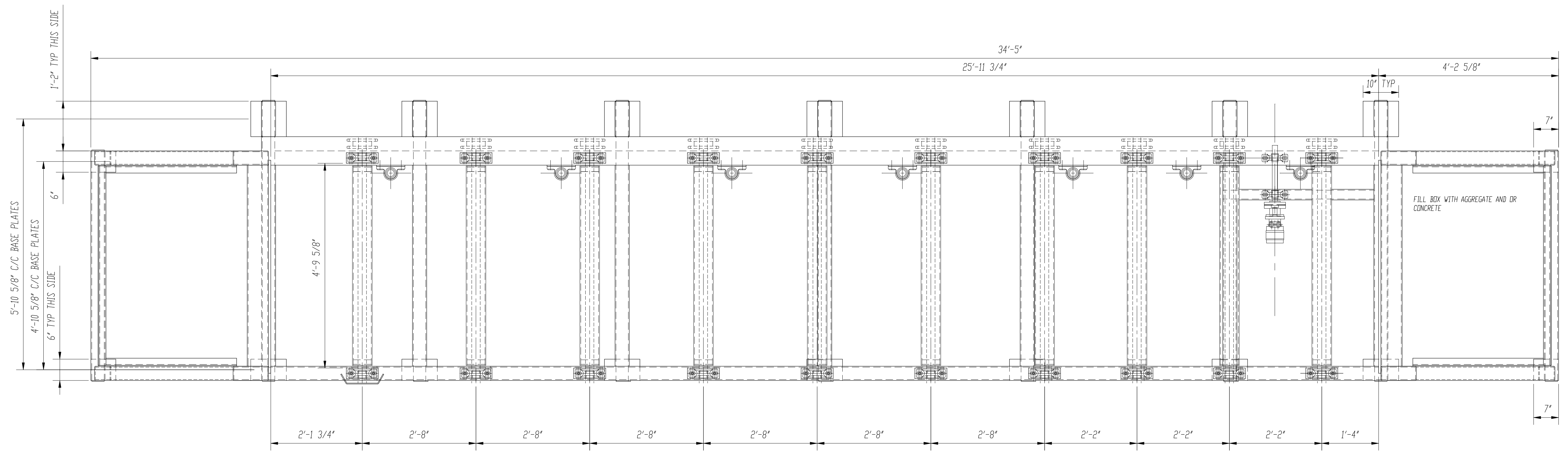
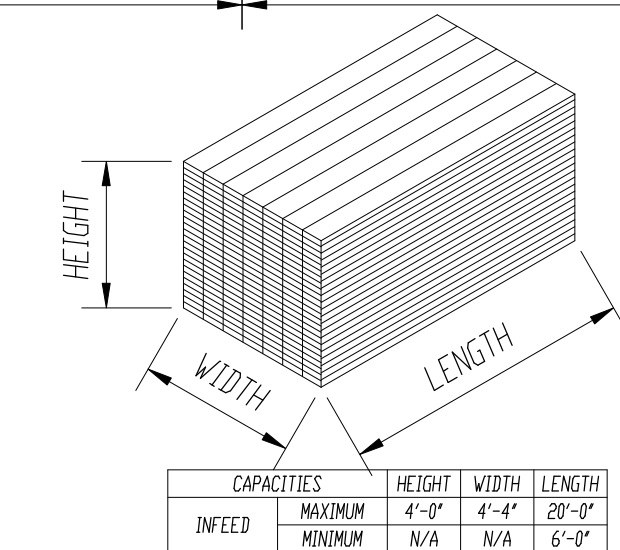


ITEM	QTY	DESCRIPTION
1	7	BACK UP ROLL SEE DRAWING BRC-100-03
2	10	BED ROLL SEE DRAWING BRC-100-03
3	14	BEARING CAN-AM SERIES 1000 1-15/16
4	20	BEARING RINGBALL UCP210-31 1-15/16φ
5	7	SPROCKET DS80-21T 1.9375φ BORE / K2SS
6	1	SPROCKET (DRIVER) 80B17 1.500φ BORE / K2SS
7	1	MOTOR SHAFT SEE DRAWING BRC-100-03
8	2	BEARING RINGBALL UCP208-24 1-1/2φ
9	1	HYDRAULIC MOTOR - WHITE
12	1	MOTOR ADAPTOR SEE DRAWING BRC-100-03



ELECTRICAL SUPPLY  
/ 3 PHASE

APPROVED FOR CONSTRUCTION:  
/ 2003  
MONTH DAY



**L-M EQUIPMENT CO. (1981) LTD.**  
BURNABY, BC

**GENERAL ARRANGEMENT**  
**20'-0" DOUBLE END BUMP**

DATE: 10-21-02 SCALE: 1"=1'-0"  
 DWG BY: GMAC DWG No: BRC-100-01  
 CHK BY: RW