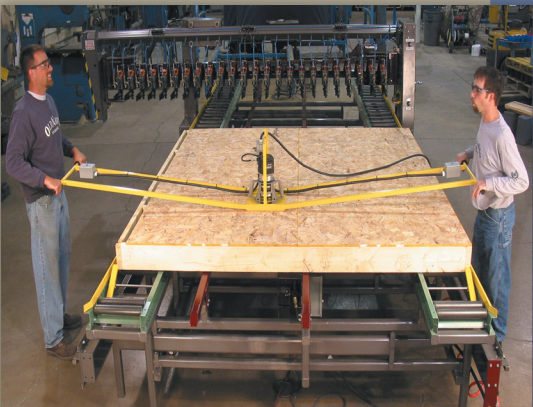
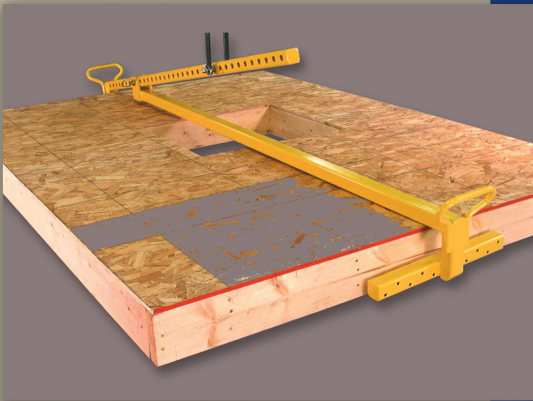
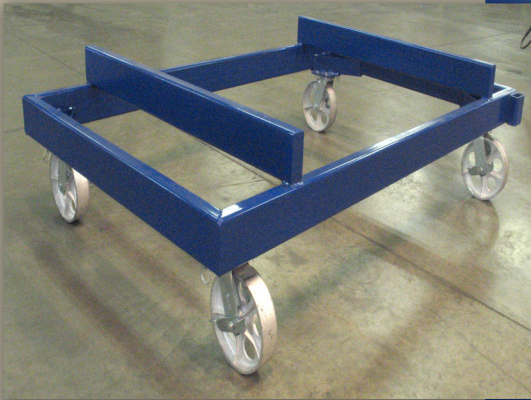




WALL PANELS
FLOOR PANELS
MATERIAL HANDLING



EQUIPMENT ACCESSORIES & OPTIONS



www.panplus.com

Wall Panel Equipment Accessories

HANDLEBAR ROUTER

- Extended control arm allows operators to reach all edges of panel
- 2 person operation – safety power switches at each end give both operators control of router
- Lightweight design and rubber hand grips for comfortable operation
- 3 1/4 HP router – 120V, 60Hz – 21,000 RPM with soft start

WALL COMPONENT TABLES

- Squaring lip on table at top of assembly area
- Squaring stops are retractable for ease of sub-component transfer to framing station
- Rugged, quality material for optimum durability
- 10' x 10' assembly area
- Pop up roller conveyors for easy movement of components

PANEL LIFT

- 10' Lift handles panels 7' to 10'
- 12' Lift handles panels 8' to 12'
- Center lift connection allows for easy balanced lifting with ceiling hoist or forklift
- Adjustable lift arms extend with movement of one locking pin
- End handles offer convenient grasping points for manual movement of panels

CONVEYOR SECTIONS

- 10' and 15' skate-wheel conveyors
- Custom lengths available
- Adjustable from 31" to 35" high

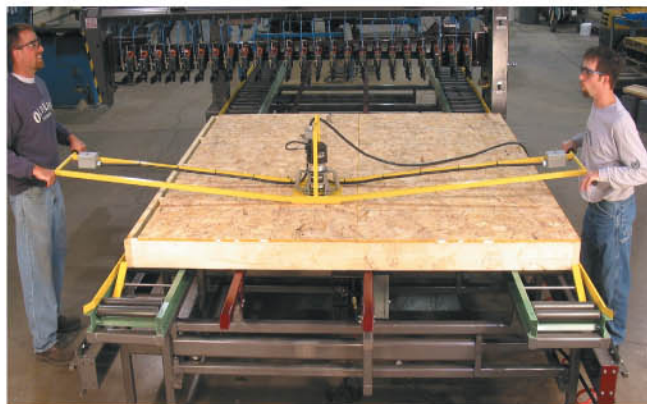
FRAMING TABLE LIGHT BARS

- Shows stud locations
- Driven by design software
- Shows component layout locations

MATERIAL HANDLING CARTS

- Heavy-duty carts, built for optimum durability
- Quality steel wheels, locking wheels available
- Custom built to your specifications

Panels Plus is a customer focused company. Along with our "common sense" robust design we offer much more. Our equipment is designed and built with expansion in mind. As your business grows so can your system. We can help with your building layout and suggest efficient equipment choices. Prompt and dependable customer service along with installation and training, makes Panels Plus stand apart from the rest.



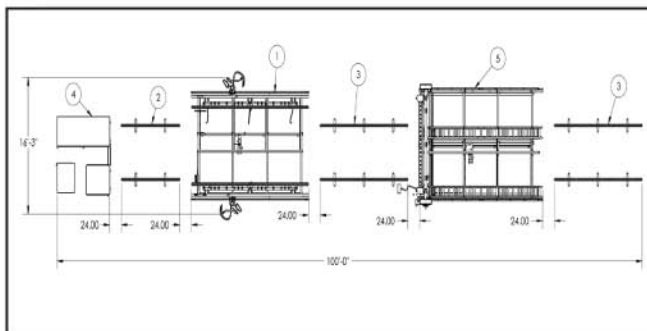
Handlebar router



Wall component tables



Material carts



Wall panel line example



An employee
owned
company



PANELS PLUS®

The Evolution of Building

Albert Lea, MN 56007
sales@panplus.com

866.726.7587